

Genesee County Health Department

Annual Report 2011-2012



Better Life Through Better Health

Working with the Community

Genesee County Board of Commissioners

Jamie Curtis, Chairperson, District 3
Ted Henry, Vice Chairperson - District 8
Joseph Graves, District 6
Archie Bailey - District 7
Brenda Clack - District 2
Miles Gadola - District 5
Patrick Gleason - District 9
John Northrup - District 4
Omar Sims - District 1

Genesee County Board of Health

Brenda Clack, Chairperson
John Northrup, Vice-Chairperson
Archie Bailey
Laura Ann Carravallah, MD
Kay Doerr

Genesee County Health Department Administration

Mark Valacak, MPH, Health Officer
Gary K. Johnson, MD, MPH, Medical Director
Frank Ricica, MPA, Director of Clinical Services

Our Vision...

Better Life Through Better Health

Our Mission...

The mission of the Genesee County Health Department is...

To improve the quality of life in Genesee County by preventing disease, promoting health and protecting the public from environmental hazards to health.

Burton Branch
G-3373 S. Saginaw Street
Burton, Michigan 48529
(810) 742-2255
FAX (810) 742-2561

Floyd J. McCree Courts and Human Services Center
630 S. Saginaw Street
Flint, Michigan 48502
(810) 257-3612
FAX (810) 257-3147



www.gchd.us





A Message From the Health Officer...

Dear Genesee County Residents,

On behalf of the Genesee County Commissioners, Board of Health, and department staff, I am pleased to present the Genesee County Health Department's Annual Report for 2012.

This report provides an overview of the health status of Genesee County residents and an update on progress toward our 2008–2012 Strategic Plan. This year wraps up our 2008–2012 Strategic Plan and we begin to envision a new plan to focus on our most important goals and objectives to improve the health of Genesee County residents.

This year we engaged in the process of creating a new GCHD website. We hope this will help supply current, local, public health information as the importance of internet presence and social media grows in our society.

As we move forward, please join us in our efforts as we work to promote a healthy environment and improve quality of life in Genesee County.

Wishing you “Better Life Through Better Health”.

Sincerely,

Mark Valacak
Health Officer

2008–2012 Strategic Plan

Our Goal

To improve the health status of Genesee County residents, with particular attention to eliminating racial, social, and economic inequities and using prevention and intervention strategies that target underlying causes.

Our Organizational Strategies

- 1) Foster a Learning Organization
- 2) Evaluate Programs
- 3) Implement Evidence-Based Practices
- 4) Improve Quality Continuously
- 5) Enhance Communication
- 6) Partner with Community Residents
- 7) Convene Public Health System Agencies
- 8) Coordinate Across Disciplines
- 9) Work for Health Equity
- 10) Secure Adequate Resources

Our Public Health System Strategies

- 1) Create Environments for Healthy Living
- 2) Adopt and Assure Compliance with Public Health Regulations
- 3) Assure Essential Public Health Services
- 4) Assure Access to Comprehensive Health Care for All
- 5) Enhance Public Health Emergency Prevention and Response
- 6) Reduce Accumulation of Negative Social Conditions that Harm Population Health

Critical Health Indicators

Long Term Outcome Measures



1. Preventing Infant Deaths

	Overall			African-American			White		
	Genesee Co.		Michigan	Genesee Co.		Michigan	Genesee Co.		Michigan
	<u>2010</u>	<u>2011</u>	<u>2011</u>	<u>2010</u>	<u>2011</u>	<u>2011</u>	<u>2010</u>	<u>2011</u>	<u>2011</u>
Infant Deaths ¹	5.7	8.0	6.6	14.6	14.3	13.7	5.0	5.3	4.9

2. Preventing Chronic Disease

	Overall			African-American			White		
	Genesee Co.		Michigan	Genesee Co.		Michigan	Genesee Co.		Michigan
	<u>2010</u>	<u>2011</u>	<u>2011</u>	<u>2010</u>	<u>2011</u>	<u>2011</u>	<u>2010</u>	<u>2011</u>	<u>2011</u>
Heart Disease ²	254.9	222.8	201.6	232.1	277.5	277.5	137.7	210.9	191.9
Cancer ²	225.9	182.9	177.2	243	219.8	212.6	165	174.9	173.3
Stroke ²	54.0	49.3	38.7	56.5	61.1	48.4	24	47	37.8
Diabetes ²	38.7	30.3	24.2	53.8	56.7	35.6	20.1	25	22.4

3. Preventing Communicable Disease, especially sexually transmitted disease

	Overall			African-American			White		
	Genesee Co.		Michigan	Genesee Co.		Michigan	Genesee Co.		Michigan
	<u>2010</u>	<u>2011</u>	<u>2011</u>	<u>2010</u>	<u>2011</u>	<u>2011</u>	<u>2010</u>	<u>2011</u>	<u>2011</u>
Gonorrhea ³	206	212	132	544	664	485	37	69	19
Chlamydia ³	750	753	507	2100	2251	1371	173	223	151
Syphilis ^{6,3}	(5) ⁴	(6) ⁴	(8) ⁴	(4) ⁴	(3) ⁴	(179) ⁴	(1) ⁴	(0) ⁴	(98) ⁴
Tuberculosis ³	(3) ⁴	(5) ⁴	1.7	(1) ⁴	(1) ⁴	4.49	(1) ⁴	(0) ⁴	0.76

¹Rate per 1,000 live births - Genesee County Health Department and Michigan Department of Community Health. ²Age adjusted death rates are based on age specific death rates per 100,000 population in specified group - Genesee County Health Department and Michigan Department of Community Health.

³Rate per 100,000 population. ⁴() = Number of cases. The number of cases is too small (< 5) to calculate a statistically reliable rate - Genesee County Health Department and Michigan Department of Community Health. ⁵STD rates by race/ethnicity in Genesee County should be interpreted with caution because the majority of case reports are missing race/ethnicity information. Reporting is more complete from public versus private health care providers, making trends more representative of the segment of the population served by the public sector. This issue extends nationally, as similar rates of racial/ethnic disparities in STDs have been reported across the nation, as well as similar trends in missing race/ethnicity information. ⁶Primary and secondary stages only.

Assuring the Public's Health in 2012...

Genesee County Health Department staff worked to improve and protect the public's health, here are some highlights of their achievements...



Administrative Programs

- ◆ Participated in Prevention Research Center's Speak to Your Health Community Data presentation roll out.
- ◆ The Steering Prevention Reducing Obesity Utilizing Prevention (SPROUT) Coalition held a Healthy Halloween event at the Farmer's Market.
- ◆ Emergency Preparedness Program conducted a Public Health Risk Assessment for Genesee County and shared it with local partners.

Community Health

- ◆ Genesee Health Plan Staff enrolled 6,433 clients into the Genesee Health Plan. The highest number of enrollments ever for the Health Department.
- ◆ Family Planning Clinic served 4,800 clients.
- ◆ Breast and Cervical Cancer Control program screened 689 women.
- ◆ Michigan Care Improvement Registry (MCIR) staff trained 93 providers with 230 individuals, and received 3,597 help desk calls.
- ◆ Hearing and Vision Program staff screened 18,454 children for hearing and 24,393 children for vision.
- ◆ Immunization staff administered 18,252 vaccines and 609 TB tests.

Personal Health

- ◆ WIC Staff served approximately 18,482 participants through the Women, Infants and Children (WIC) Program.
- ◆ Established WIC services at Hurley Medical Center. A nutritionist visits patients in the post partum unit to offer WIC information, education and to schedule a "fast track" appointment for newborns.
- ◆ Breastfeeding peer counselors delivered support and counseling services to 2,658 pregnant and breastfeeding women by phone and face to face meetings.
- ◆ Breastfeeding Peer Counselors facilitated 86 breastfeeding classes in the WIC Clinic reaching 611 women.
- ◆ Enrolled 137 clients into the Healthy Start Program.
- ◆ Served 314 parents and 739 children at Project Fresh/Double Up Bucks at the Flint Farmers Market.

Environmental Health

- ◆ Conducted 173 daycare and foster home inspections generating \$49,900 in revenue.
- ◆ Conducted 1853 fixed food service inspections, 30 special transitory food unit inspections, 14 mobile inspections, 190 temporary food inspections, 52 vending inspections, 165 follow-up inspections, 162 complaint investigations, 28 foodborne illness alerts, 6 foodborne illness outbreaks, 20 full plan reviews and 28 remodel plan reviews.
- ◆ Awarded Excellence in Food Sanitation Awards in ten categories in conjunction with the GCHD Public Health Conference held in April.
- ◆ Received training from Michigan Department of Agriculture and Rural Development on the new food code that was adopted in October 2012 and purchased the appropriate new hardware and software to comply with the new food code.
- ◆ Licensed and inspected 32 body art facilities.
- ◆ Childhood Lead Poisoning Prevention Program provided lead testing to 748 children.
- ◆ Issued 515 well permits in the Private and Type III Water Well Program.
- ◆ Completed 141 final inspections on newly installed wells.
- ◆ Conducted one hundred forty-six (146) tobacco compliance checks under the Regulation to Require License for Tobacco Sales and to Prohibit the Sale of Tobacco to Minors.
- ◆ Received thirty-three (33) complaints regarding State and County smoke-free air laws.
- ◆ Received a Federal Commission to conduct Tobacco Advertising and Labeling Inspections.



Assessing the Public's Health in Genesee County

Public Health
Prevent. Promote. Protect.

The public's health is measured by more than the absence or presence of disease. The following indicators¹ enrich our understanding of trends in "health" in Genesee County.

	2004	2005	2006	2007	2008	2009	2010	2011
Children								
Infant Mortality (overall rate) ²	12.4	8.9	10.0	9.4	9.1	9.4	5.7	8.0
Confirmed Victims of Abuse and/or Neglect (ages 0-17) ³	*	*	*	*	18.9	20.6	21.6	21.4
Child Poverty (% of children under age 18) ⁴	24.5	23.6	25.8	24.6	27.7	30.0	27.3	30.5
Lack of Health Insurance coverage ⁵ (% of households with uninsured children, ages 0-17)	*	5.6%	*	8.5%	*	6.3%	*	8%
Youth								
Suicide Death Rates (#under age 25) ⁶	7	8	4	6	4	5	5	8
High school drop out rate ⁷	2.64	3.87	4.92	3.43	3.58	3.04	2.89	2.82
Substance Abuse (treatment admissions) ⁸	311	297	271	232	315	*	385	361
Teenage births ⁹	47.6	44.0	47.8	47.2	48.1	52.1	36	*
Adults								
Unemployment rate ¹⁰	8.2	7.8	8.1	8.3	10.2	14.3	14.4	11
Average weekly wages ¹¹	\$724	\$725	\$757	\$721	\$737	\$718	\$723	\$748
Health Insurance Coverage ¹²	*	95%	*	95%	*	91%	*	93%
Smoking, aged 18+ ⁵	*	25.2%	*	26%	*	27.4%	*	39%
Older Adults								
Poverty, aged 65+ ¹³	9.5	7.8	8.0	7.7	8.2	5.3	6.5	7.1
All Ages								
Homicide rate ¹⁴	11.3	12.3	15.8	8.9	9.8	12.4	15	16.2
Alcohol-related highway deaths ¹⁵	18	23	27	20	22	14	11	8
Affordable housing (average rent) ¹⁶	\$607	\$612	\$626	\$649	\$628	\$628	\$628	\$628
Food stamp cases ¹⁷	28,064	31,695	34,497	36,682	38,307	43,485	52,317	57,086
Asthma (#of hospital discharges) ⁶	757	770	772	772	774	828	803	771

Footnotes/Sources: * = Data not available. ¹Adapted from the Fordham Institute for Innovation in Social Policy's Annual Index of Social Health.

²Number of infant deaths per 1,000 live births, Michigan Department of Community Health (MDCH). ³Kids Count Data Center. ⁴U.S. Census Bureau, 2011 U.S.

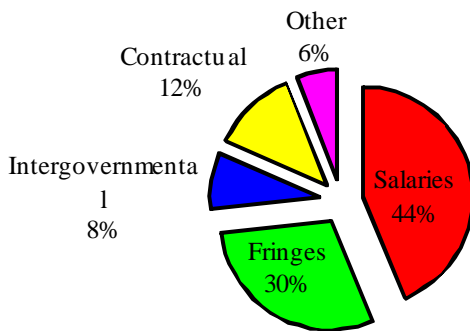
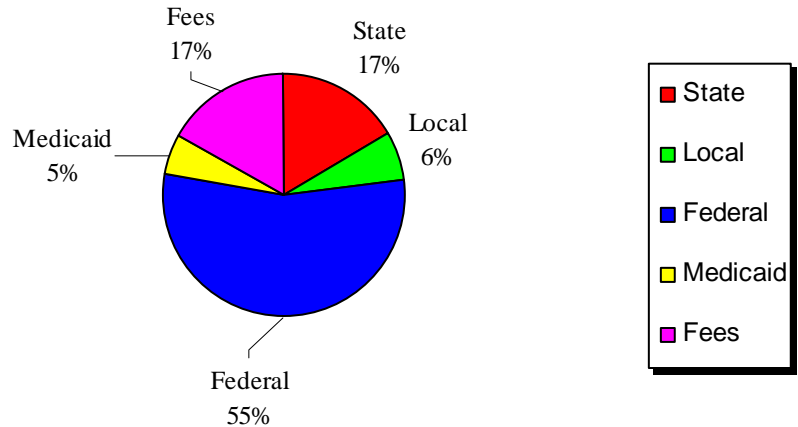
Census American Community Survey. ⁵Prevention Research Center of Michigan. ⁶MDCH. ⁷Genesee Intermediate School District. ⁸Number of treatment admissions under age 18, Genesee County Community Mental Health (reporting methodology changed after 1999). ⁹Live birth rates per 1,000 females, ages 15-19 years of age, MDCH. ¹⁰Michigan Department of Labor and Economic Growth (MDLEG). ¹¹3rd quarter average weekly wages for all industry divisions, MDLEG.

¹²2003/2005/2007 Data - Adults 18 and over, Prevention Research Center of Michigan. ¹³U.S. Census Bureau, Census 2001 Supplementary Survey. ¹⁴Age-adjusted rate (U.S. 2000 standard) of homicide deaths per 100,000 population, MDCH. ¹⁵Michigan State Police Criminal Justice Information Center. ¹⁶Fair market rent for all 2-bedroom living units, HUD. ¹⁷Average number of household food stamp cases, Michigan Department of Human Services.

2011–2012 Budget

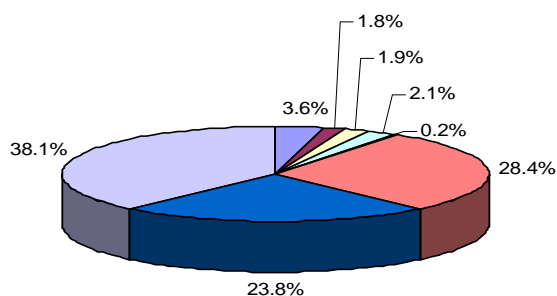
Revenues

State	2,140,974
Local	833,853
Federal	7,062,149
Medicaid	681,888
Fees	2,173,457
Total	<u>12,892,321</u>



Expenditures

Salaries	5,629,409
Fringes	3,813,702
Intergovernmental	1,087,511
Contractual	1,593,870
Other	767,828
Total	<u>12,892,321</u>



Expenses by Function

- Central Support Services
- Bioterrorism
- Intergovernmental
- Management Information Services
- Laboratory
- Community Health Division
- Environmental Health Division
- Personal Health Division

Annual Report 2012

For more information about our programs please visit our website at www.gchd.us.

Body Art - Breast & Cervical Cancer Control Program (BCCCP) - Breastfeeding Education & Support - Childhood Lead Poisoning Prevention Program - Children's Special Health Care Services (CSHCS) - Communicable Disease/Tuberculosis Control - Daycare Centers & Foster Homes Inspections - Emergency Preparedness - Epidemiology - Family Planning - Fetal Infant Mortality Review (FIMR) - Food Service Sanitation - Genesee County Healthy Start Initiative - Health Care Outreach & Enrollment - Healthy Homes - Hearing & Vision Screening - HIV/AIDS Prevention and Treatment - HIV Counseling/Testing - Immunizations - Laboratory - Michigan Care Improvement Registry (MCIR) - On-Site Sewage Disposal Monitoring - Programs to Reduce Infant Deaths Effectively (PRIDE) - Racial and Ethnic Approaches to Community Health (REACH) - Recreation Sanitation - Residential and Type III Water Well Inspections - Safe Sleep - SPROUT (Steering Prevention Reducing Obesity Utilizing Teamwork) - Sexually Transmitted Disease Program - Waste Management Evaluations - Tobacco Reduction/Enforcement - Water Supply - WISEWOMAN - Women, Infants & Children Supplemental Nutrition Program